

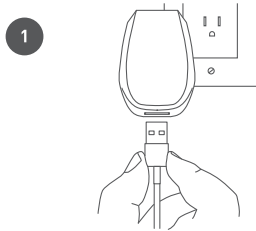
AUTOMATE

Pulse 2 Hub

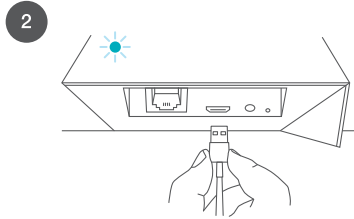
WELCOME / BIENVENUE / WILKOMMEN / BIENVENIDO

Quickstart guide

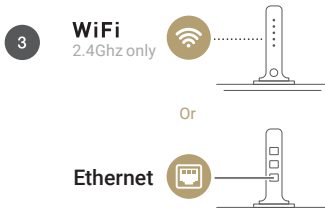
SETUP / INSTALLER / KONFIGURATION / PREPARAR



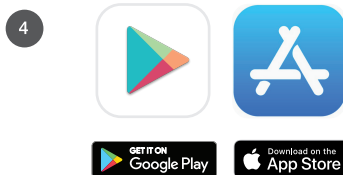
Plug your Hub into a centrally located power outlet.



Confirm that the Hub is blinking blue after being powered on.

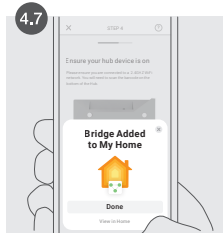
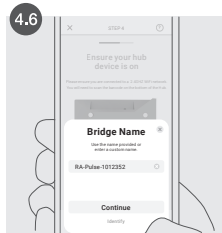
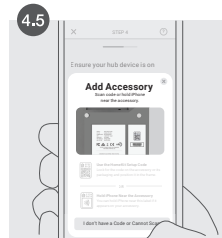
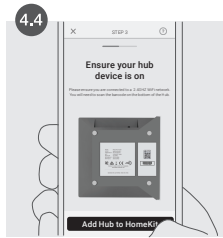
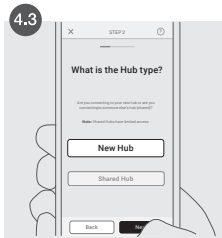
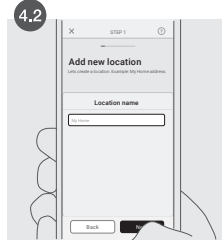
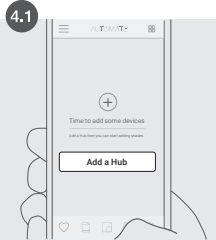


Pair the Hub to your network by using the Wi-Fi 2.4Ghz or connecting a network cable to the Ethernet Port on your router.



Download the Pulse 2 app from the Apple Store or Google Play Store.

IOS - HomeKit Pairing Process



HomeKit



Android Pairing Process

